

990 AMERICAN LEGION HIGHWAY

270 Unit Apartment Development | Hyde Park, MA

Revised January 11, 2021



HYDE PARK AERIAL VIEW

LINCOLN
PROPERTY
COMPANY

JOHN NOONE | EXECUTIVE VICE PRESIDENT - NORTHEAST
Phone 781-398-2223 · Email JNoone@LPSI.com

ROBERT TIERNEY | VP OF CONSTRUCTION - NORTHEAST
Phone 781-790-8004 · Email RTierney@LPSI.com

ERIC ROSENTHAL | DEVELOPMENT ANALYST
Phone 781-790-8001 · Email ERosenthal@LPSI.com

SITE PLAN

LEGEND

- 1 RESIDENTIAL BUILDING
- 2 CLUBHOUSE BUILDING
- 3 CLUBHOUSE POOL & POOL DECK
- 4 SURFACE PARKING (TYP)
- 5 PEDESTRIAN WALKWAY (TYP)
- 6 ENHANCED PLANTED AREA (TYP)
- 7 LAWN (TYP)
- 8 STREET TREE (TYP)
- 9 PLANTED BUFFER
- 10 LANDSCAPE BUFFER
- 11 MAINTENANCE GARAGE
- 12 TRASH COMPACTOR
- 13 MAIN ENTRY DRIVE
- 14 TRAIL SYSTEM
- 15 PLAYGROUND
- 16 OUTDOOR MEETING SPACE
- 17 DOG RUN
- 18 PLAYING FIELD



OPEN SPACE PLAN



PROJECT RENDERINGS



PROJECT RENDERINGS



PROJECT RENDERINGS



PROJECT RENDERINGS



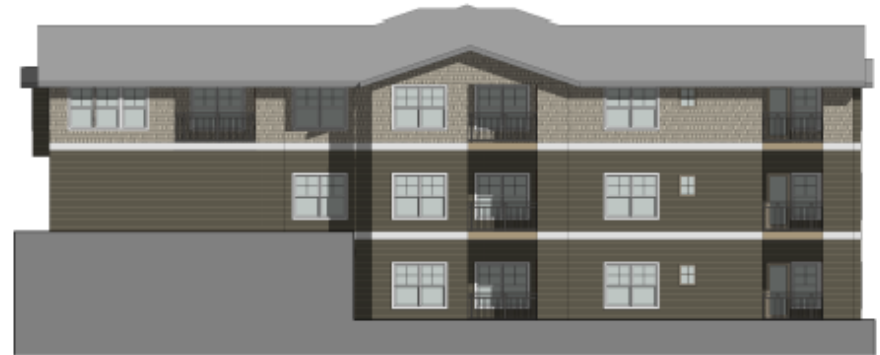
SAMPLE ELEVATIONS



4 **BUILDING TYPE 1A-ELEVATION 3**
1/8" = 1'-0"



2 **BUILDING TYPE 1A-ELEVATION 2**
1/8" = 1'-0"



3 **BUILDING TYPE 1A-ELEVATION 4**
1/8" = 1'-0"

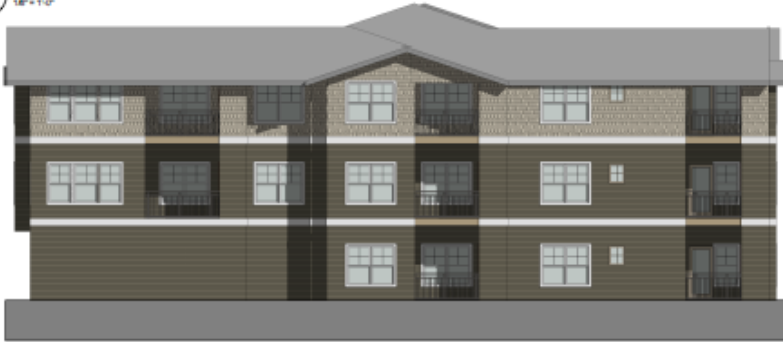


1 **BUILDING TYPE 1A-ELEVATION 1**
1/8" = 1'-0"

SAMPLE ELEVATIONS



4 BUILDING TYPE 2-ELEVATION 3
1/8"=1'-0"



2 BUILDING TYPE 2-ELEVATION 2
1/8"=1'-0"



3 BUILDING TYPE 2-ELEVATION 4
1/8"=1'-0"

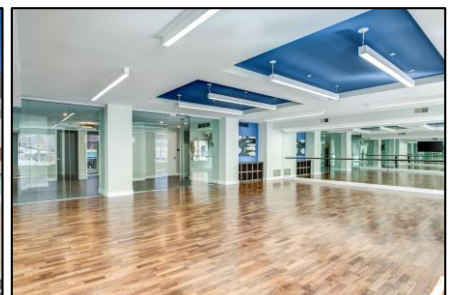
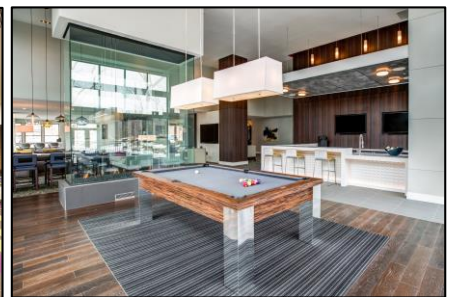
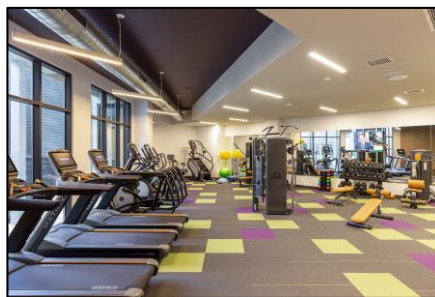


1 BUILDING TYPE 2-ELEVATION 1
1/8"=1'-0"

PROPERTY AMENITIES



- LEED Gold
- On-Site Parking with Garages Available
- Entertainment Lounge
- Fitness Center
- Motion Studio
- Community Kitchen
- Coffee Bar Cafe
- Package Room
- Outdoor Pool
- Grilling Stations
- Dog Park
- Playgrounds & Playing Field
- Outdoor Meeting Space
- ½ Mile Trail Network
- Bike Storage & Repair
- Electric Car Charging Stations



**Photos are from recent Lincoln developments and are representative of the type of amenities and level of finishes at 990 American Legion Highway.*



Developer:

Lincoln Property Company

Architect:

Heffner Architects, P.C.

Civil and Traffic Engineer:

Howard Stein Hudson

MEP Engineer:

RW Sullivan Engineering

Structural Engineer:

Alliance Engineering

Geotechnical and Environmental Engineer:

GZA Geoenvironmental Inc.

Landscape Architect:

LandDesign

Environmental Consultant:

Epsilon Associates Inc.

LEED Consultant:

Steven Winter Associates, Inc.

ADA Consultant:

Kessler, McGuinness & Associates

Community Relations:

Nauset Strategies

General Counsel:

Mintz, Levin, Cohn, Ferris, Glovsky and
Popeo, P.C.