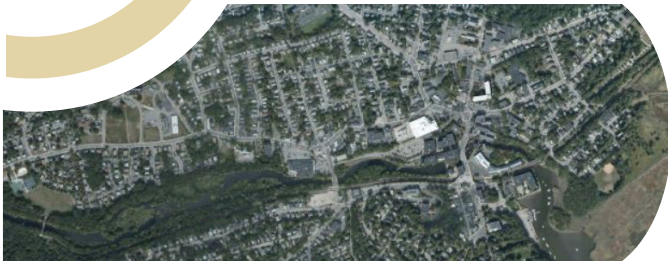




SUPERFUND

Lower Neponset River Site Boston/Milton, MA



THE SUPERFUND PROGRAM protects human health and the environment by investigating and cleaning up often-abandoned hazardous waste sites and engaging communities throughout the process. Many of these sites are complex and need long-term cleanup actions. Those responsible for contamination are held liable for cleanup costs. EPA strives to return previously contaminated land and groundwater to productive use.

EPA PUBLIC INFORMATIONAL MEETING:

MONDAY, FEBRUARY 24, 2020

6:30 PM - 8:30 PM

Auditorium at Mildred Avenue Middle School

We encourage all to attend.

5 Mildred Avenue

Mattapan, MA

KEY CONTACTS:

ZANETTA PURNELL

U.S. EPA Community
Involvement Coordinator

617-918-1306

purnell.zanetta@epa.gov

MEGHAN CASSIDY

U.S. EPA Supervisory
Environmental Engineer

617-918-1387

cassidy.meghan@epa.gov

SITE DESCRIPTION:

The Lower Neponset River site is currently identified by the U.S. Environmental Protection Agency (EPA) as the 3.7-mile stretch of the Neponset River from the point where it merges with Mother Brook, a branch of the Neponset River located upstream of Dana Avenue, Hyde Park, Massachusetts (MA), extending downstream to the Walter Baker Dam located upstream of Adams Street, Dorchester/Milton, MA. Based on preliminary studies, this portion of the river contains sediment contaminated with elevated levels of polychlorinated biphenyls (PCBs). The Lower Neponset River channel ranges from approximately 40 feet to 300 feet wide and comprises an estimated 40 acres within or bordering the City of Boston (Hyde Park, Mattapan, and Dorchester sections) and the Town of Milton, MA. The site is bordered by residential, commercial, industrial, and public parcels of land, including the Neponset River Greenway. Historically, numerous mills were established along this portion of the Neponset River in the neighborhoods of Dorchester, Milton, Hyde Park, and Mattapan, utilizing dams to generate power initially to turn mill grinding wheels and later to operate the large industrial mills. These mills and other industrial facilities in the area may have contributed to the river contamination.

GENERAL INFO:

TOLL-FREE CUSTOMER SERVICE

1-888-EPA-7341

LEARN MORE AT:

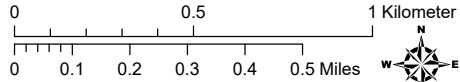
www.epa.gov/superfund

continued >>

Lower Neponset River Proposed National Priorities List Site Map



Scale 1 : 20,000
when printed at 8 1/2" x 11"

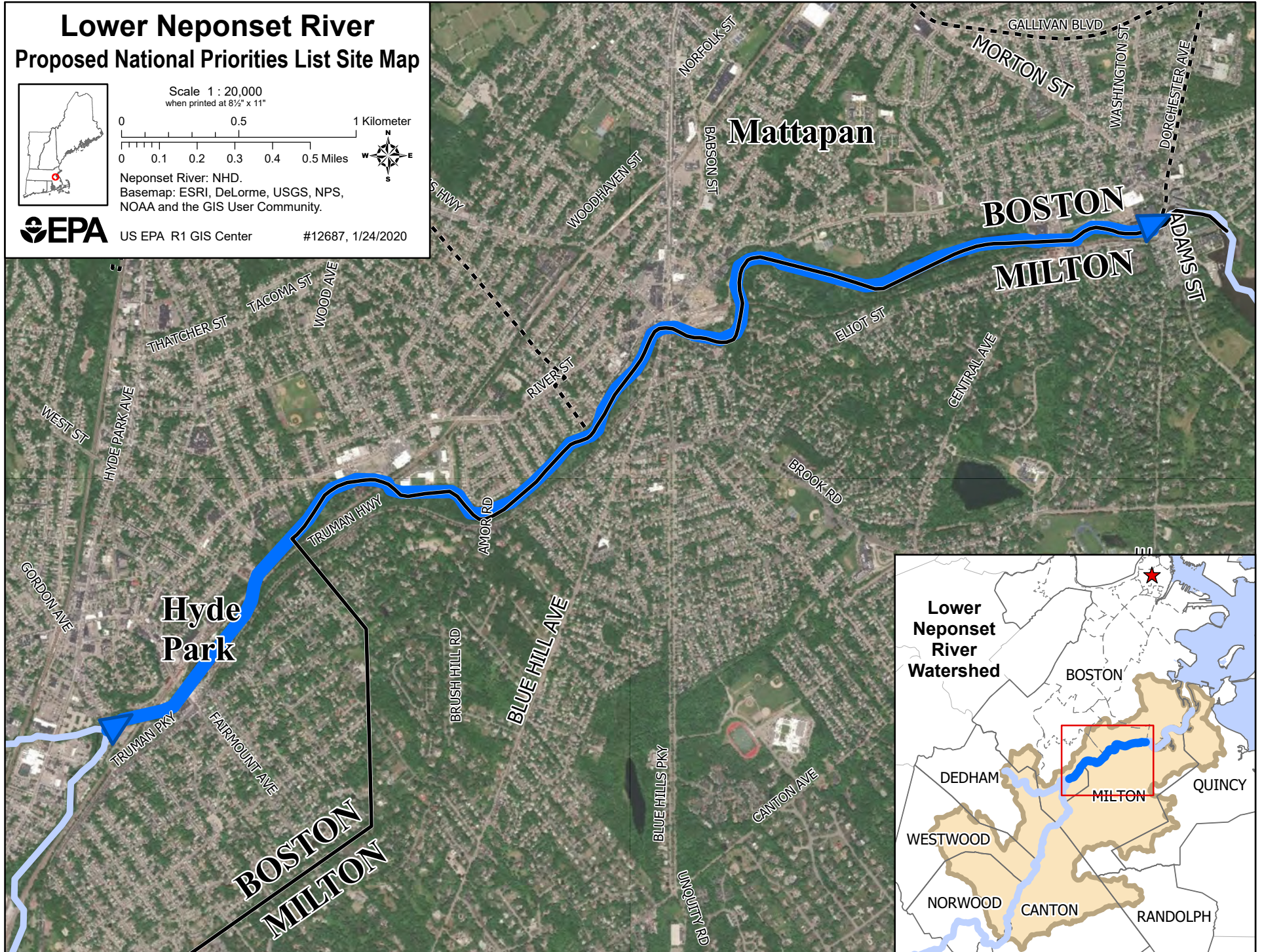


Neponset River: NHD.
Basemap: ESRI, DeLorme, USGS, NPS,
NOAA and the GIS User Community.

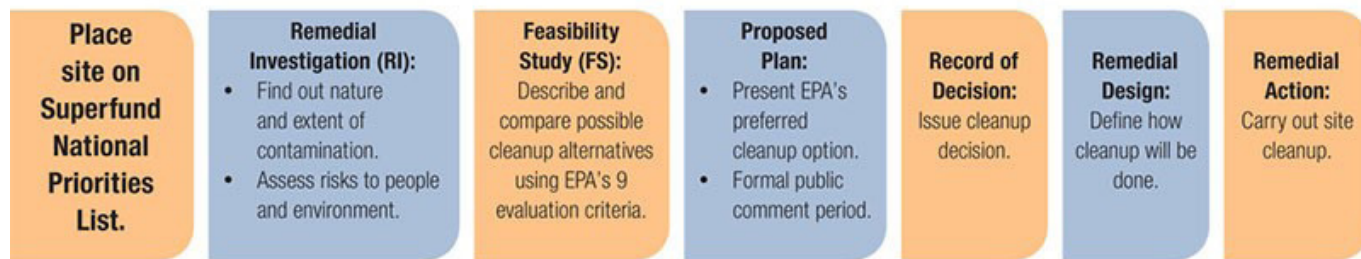


US EPA R1 GIS Center

#12687, 1/24/2020



The EPA's Superfund Process



Community Engagement: We want to hear from you!

There will be opportunities for you to be involved throughout the cleanup process.
This will help us design a cleanup that considers community ideas and needs.

EPA is currently considering this site for proposal to the National Priorities List (NPL). EPA is taking this action, in response to a request from the Massachusetts Department of Environmental Protection (MassDEP).

EPA is currently preparing the documentation, called a Hazard Ranking System (HRS) package, to make a final determination regarding the Lower Neponset River's eligibility for inclusion on the NPL. Following proposal to the NPL, a public comment period is held before a site is finalized to the NPL.

SUPERFUND- NATIONAL PRIORITIES LIST (NPL):

The (NPL) is a list of sites EPA determines require further detailed investigation and potential cleanup under the Comprehensive Environmental Response, Compensation and Liability Act (CERCLA), often referred to as Superfund.

- Sites on NPL subject of detailed investigation, and cleanup where warranted.
- Only sites on the NPL are eligible to receive federal Superfund resources for comprehensive cleanup.
- Federal resources can include monetary support, as well as expertise/staffing.
- Absent the use of federal resources, comprehensive cleanup strategies may not be able to be pursued.

To view more information on a NPL listing , please visit: <https://www.epa.gov/superfund/superfund-national-priorities-list-npl>

To view more information on HRS, please visit: <https://www.epa.gov/superfund/hrs-toolbox>

To view more information on the Site Assessment Process, please visit:
<https://www.epa.gov/superfund/superfund-site-assessment-process>